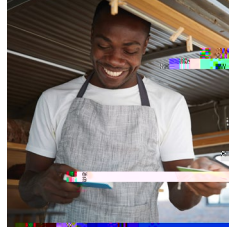
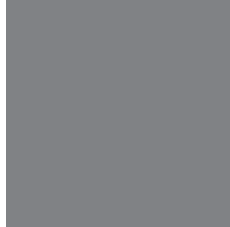


POSH™

Dependable Operation of Complex Transaction Processing Through a Fully Integrated, End-to-End Solution



POSH from Fiserv gives your organization reliable handling of transaction processing throughout the entire transaction life cycle allowing you to stay competitive, fully compliant and secure in today's fast-paced payments industry.

Value for Your Organization

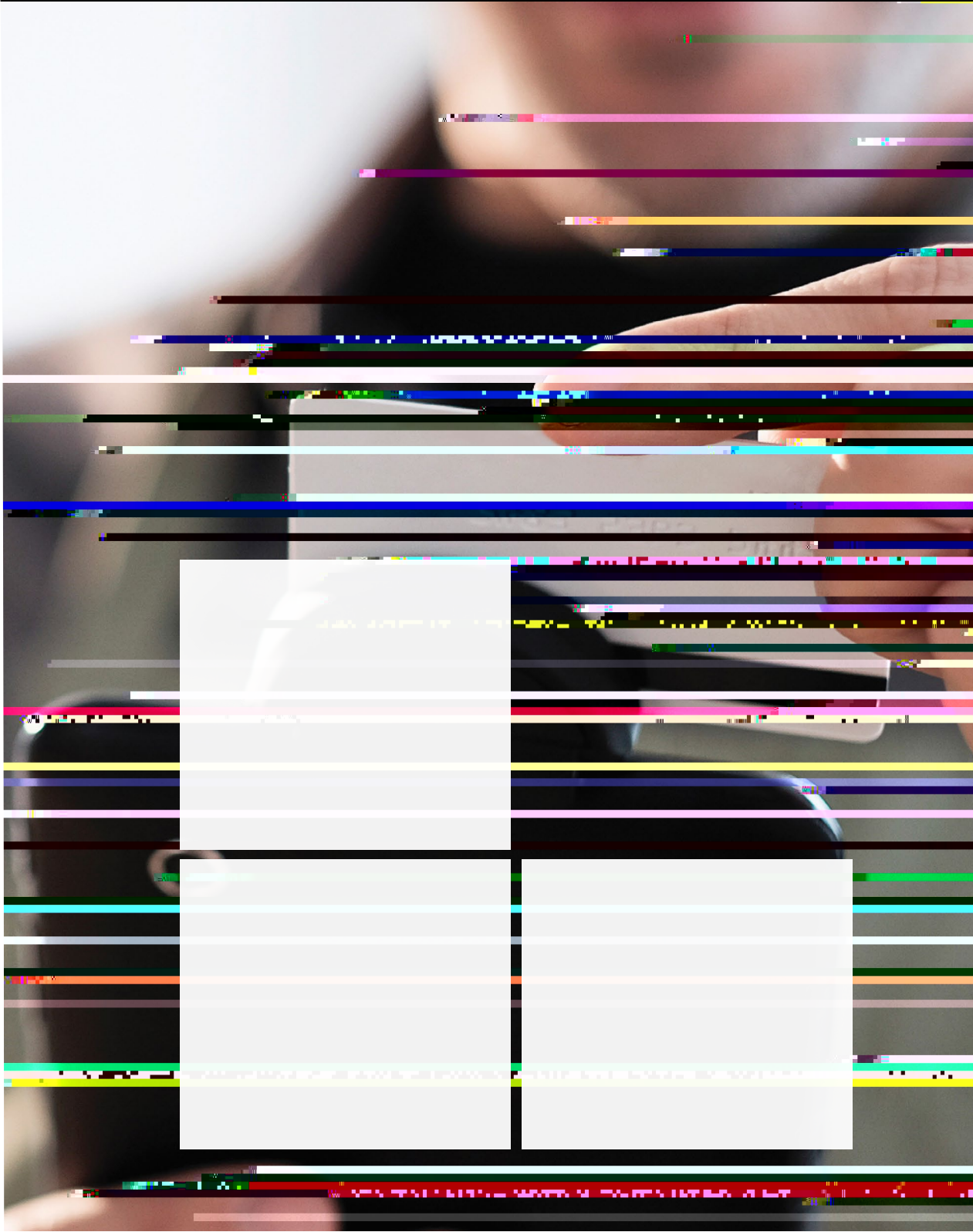
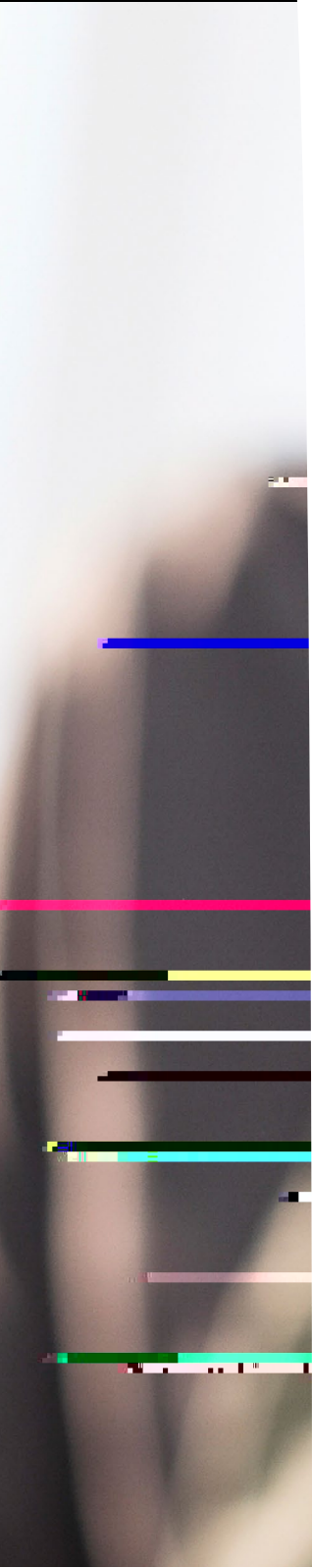
POSH is an ATM and POS terminal management, authorization and switching solution for payment cards and payment transaction systems. From device driving to authorization support, POSH provides dependable operation of complex transaction processing through a fully integrated, end-to-end product with the entire range of services needed to complete the transaction life cycle. Multichannel support allows you to acquire, process, clear and settle debit/credit transactions from any source or touchpoint in any format across any network. POSH provides intelligent switching – with transactions routed to multiple hosts based on business rules – and ensures each transaction is delivered successfully to the issuer or network with full compliance to meet all security standards. The software is EMV® enabled and PCI PA DSS certified.

Key Benefits

- Guaranteed accuracy
- Improved reliability with real-time authorizations
- Fully compliant transaction processing services
- Multiple channel support
- Fully integrated end-to-end product
- Improved operating efficiency
- Reduced cost of ownership
- Increased speed to market
- New revenue streams and opportunities for your institution
- Ability to differentiate, modernize and enhance merchants' POS experience

Connect With Us

For more information about POSH, email getsolutions@fiserv.com or visit www.fiserv.com.



Blank white rectangular area, likely a redaction or placeholder for text.

Blank white rectangular area, likely a redaction or placeholder for text.

Blank white rectangular area, likely a redaction or placeholder for text.